



Vermietungsunterlagen

Wohnüberbauung Grendelgasse Riehen



**Haus nr. 22:
5.5 - Zimmer**

Erdgeschoss:

Entree	6.5 m ²
Wohnen/Essen	31.7 m ²
Kochen	8.5 m ²
WC	1.7 m ²

Obergeschoss:

Zimmer	13.2 m ²
Zimmer	15.4 m ²
Diele	15.3 m ²
Bad	6.1 m ²

Dachgeschoss:

Gang	4.3 m ²
Zimmer	10.2 m ²
Zimmer	19.5 m ²
Dusche	3.4 m ²

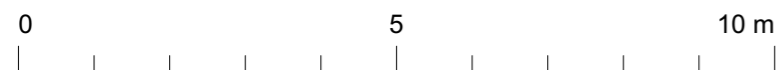
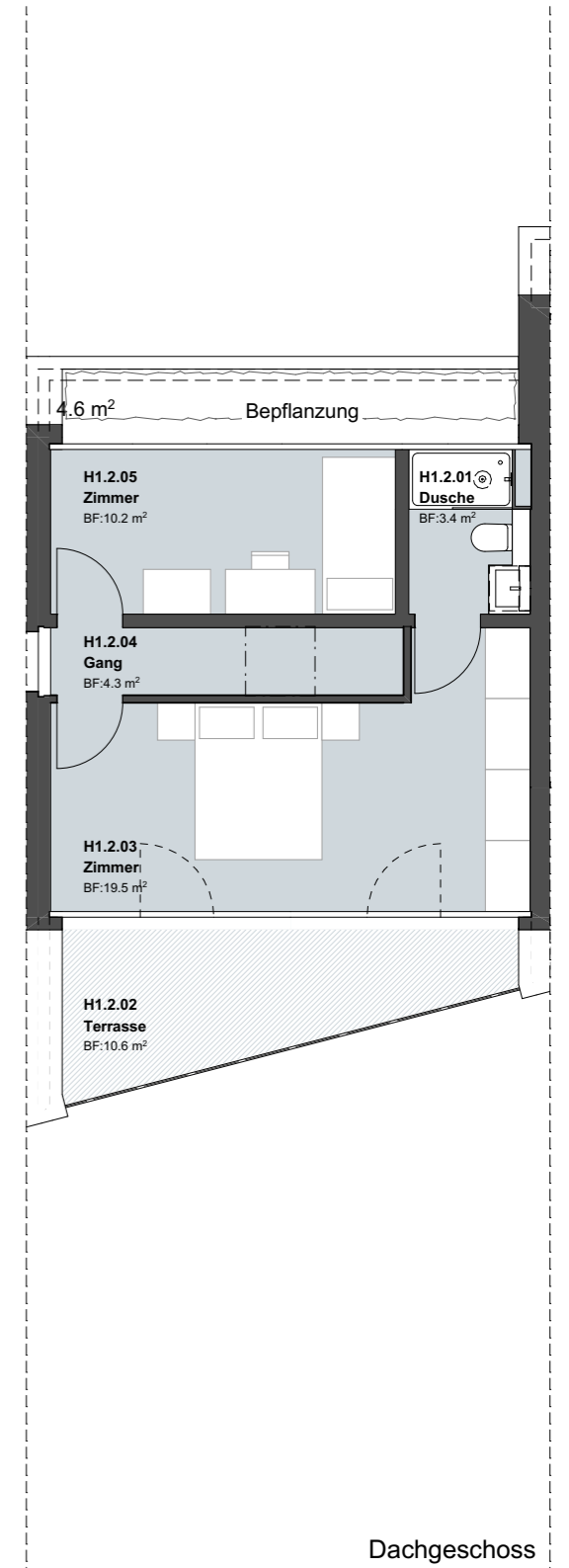
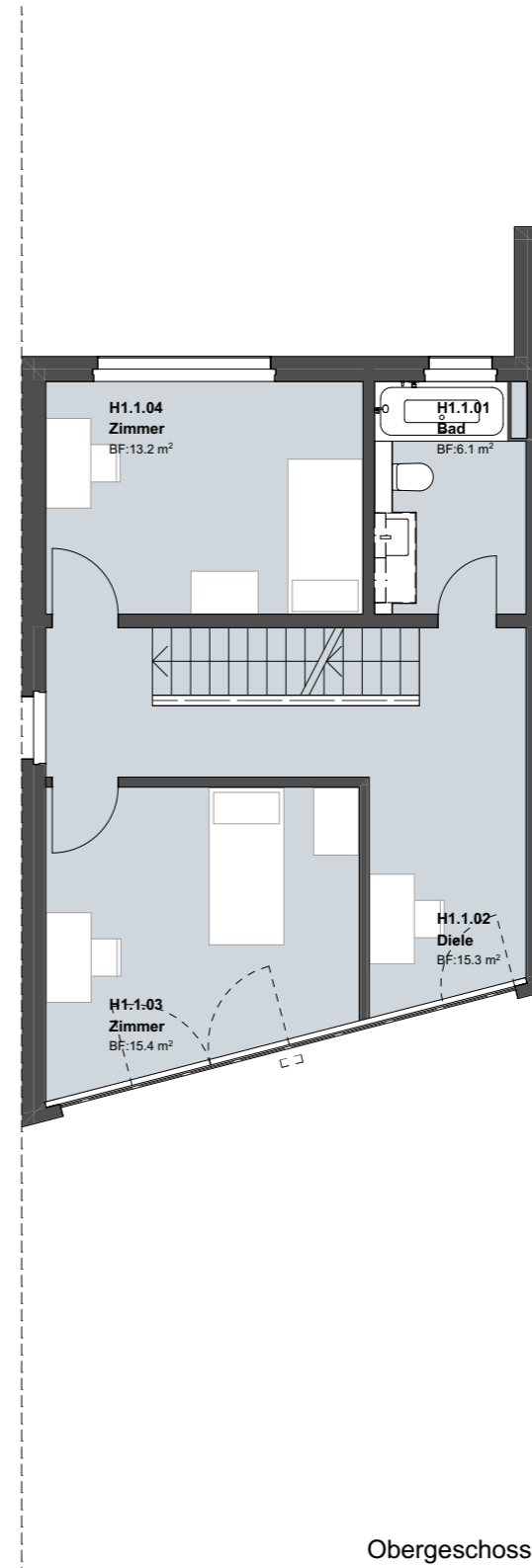
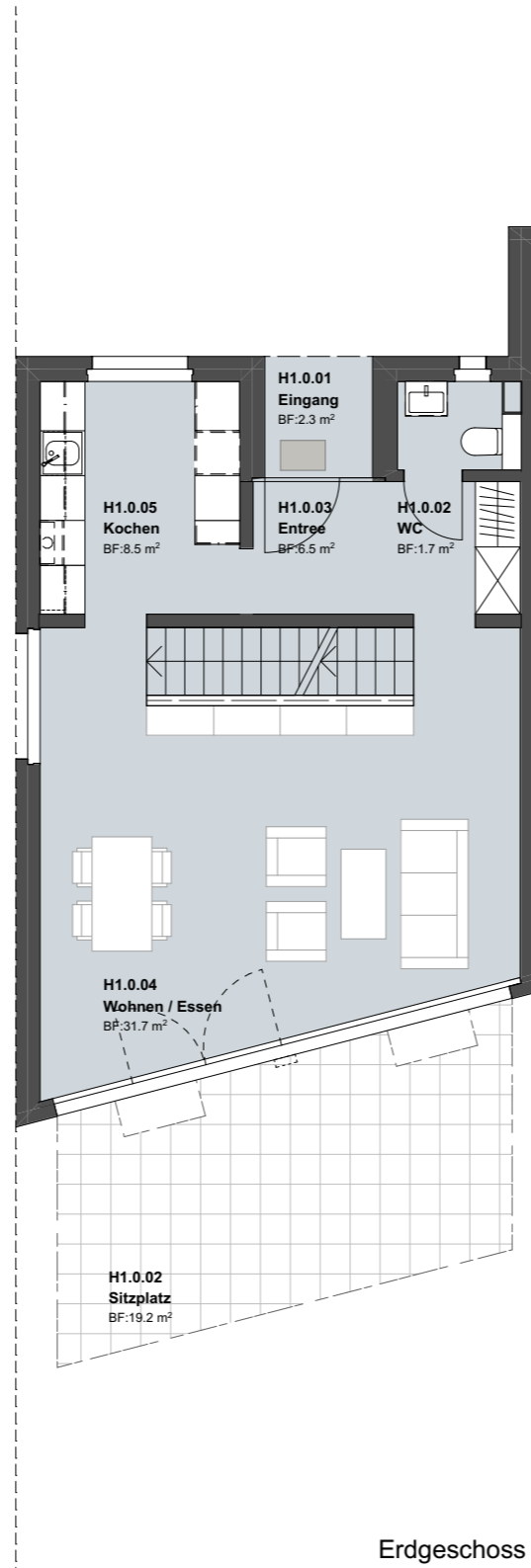
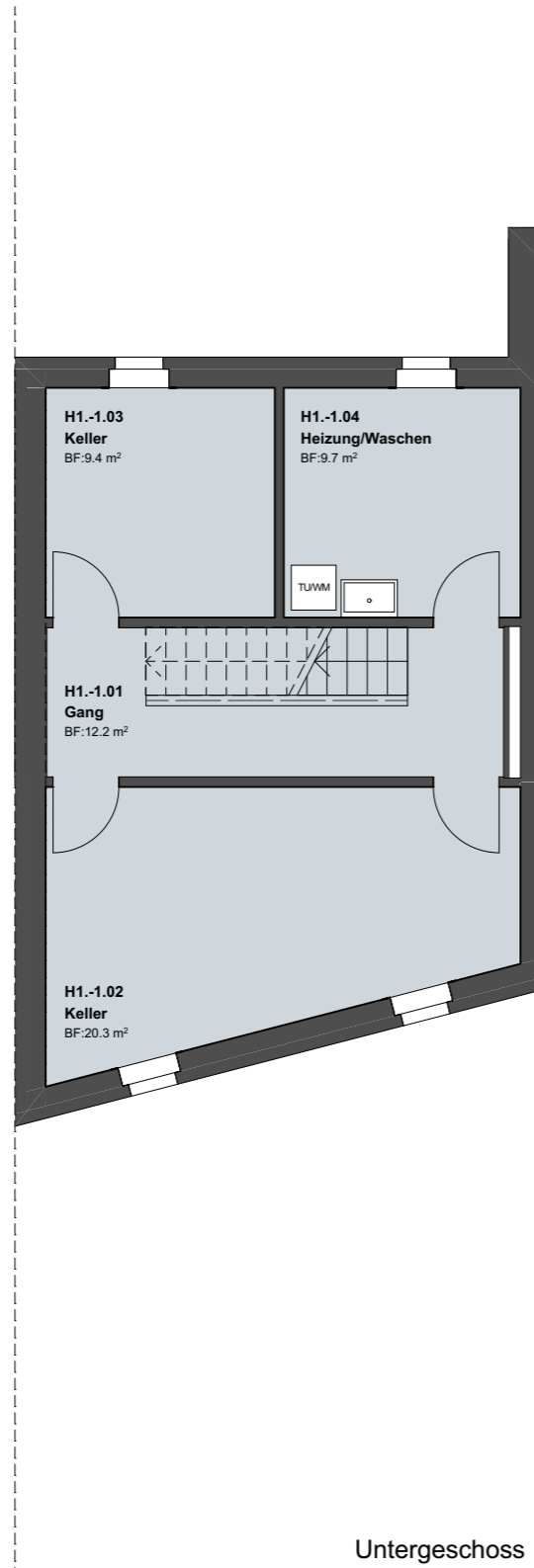
Wohnfläche 135.8 m²

Untergeschoss:

Gang	12.2 m ²
Keller	9.4 m ²
Keller	20.3 m ²
Heizung/Waschen	9.7 m ²

Parkplatz:

Parkplatznummer 1



**Haus nr. 22a:
5.5 - Zimmer**

Erdgeschoss:

Entree	6.5 m ²
Wohnen/Essen	31.7 m ²
Kochen	8.5 m ²
WC	1.7 m ²

Obergeschoss:

Zimmer	13.2 m ²
Zimmer	15.4 m ²
Diele	15.3 m ²
Bad	6.1 m ²

Dachgeschoss:

Gang	4.3 m ²
Zimmer	10.2 m ²
Zimmer	19.5 m ²
Dusche	3.4 m ²

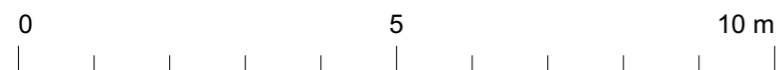
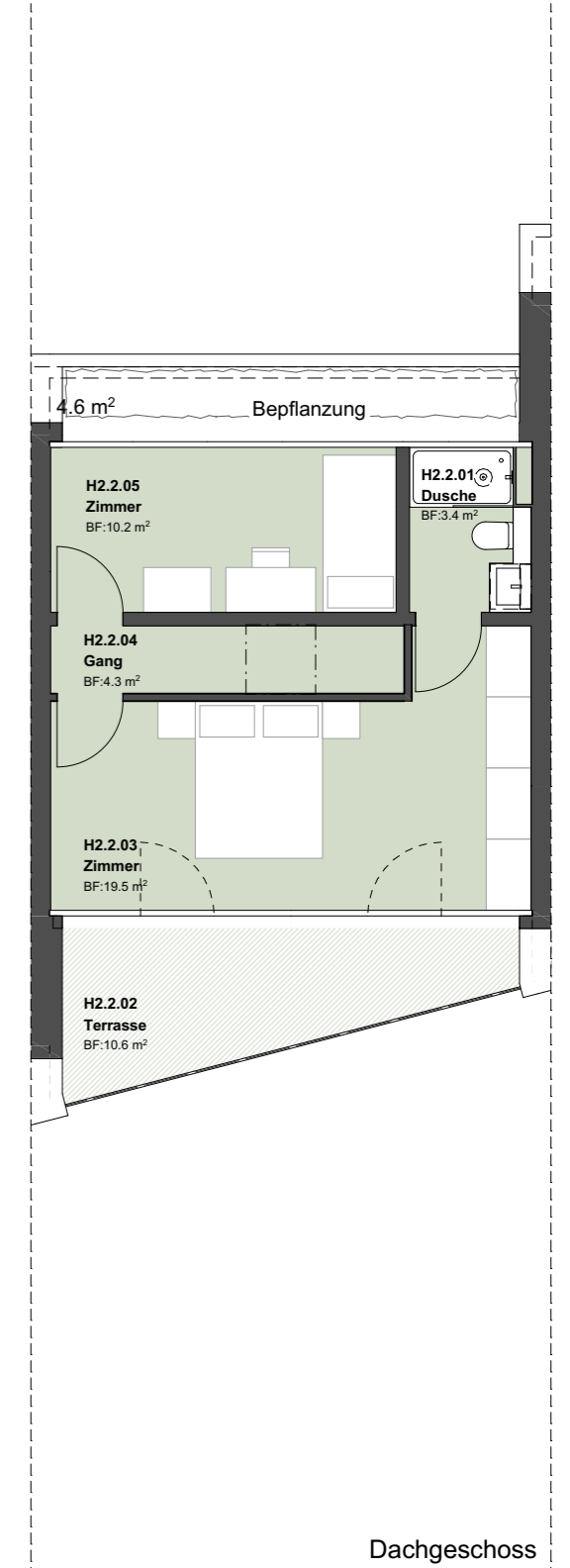
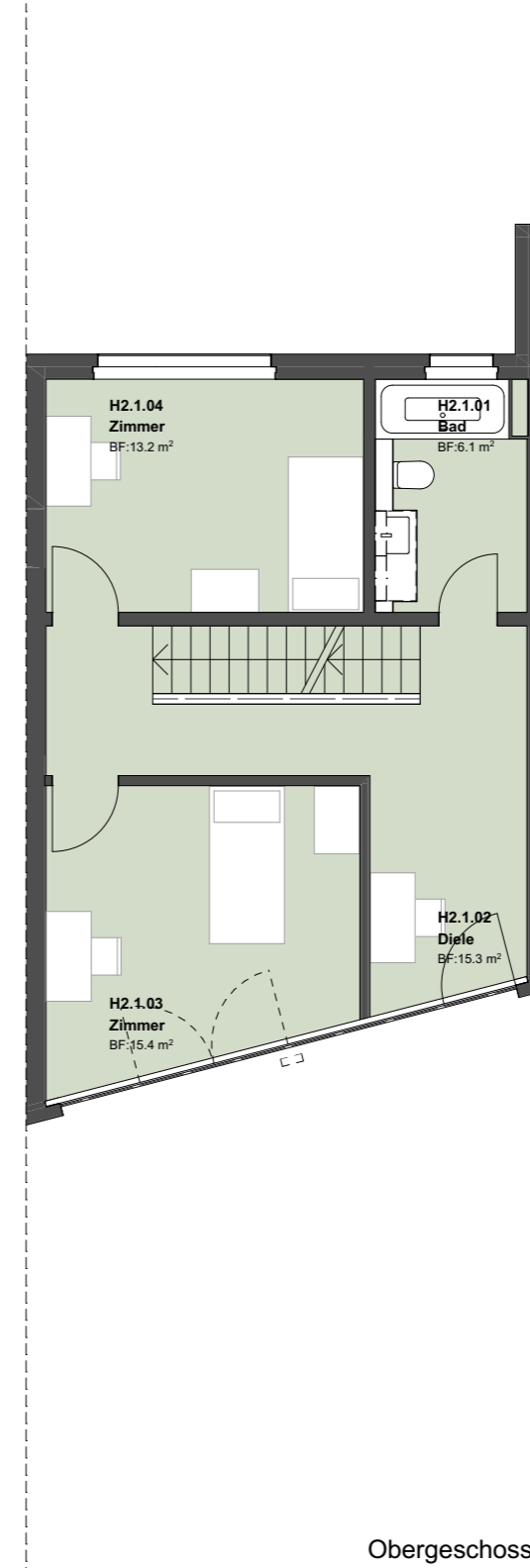
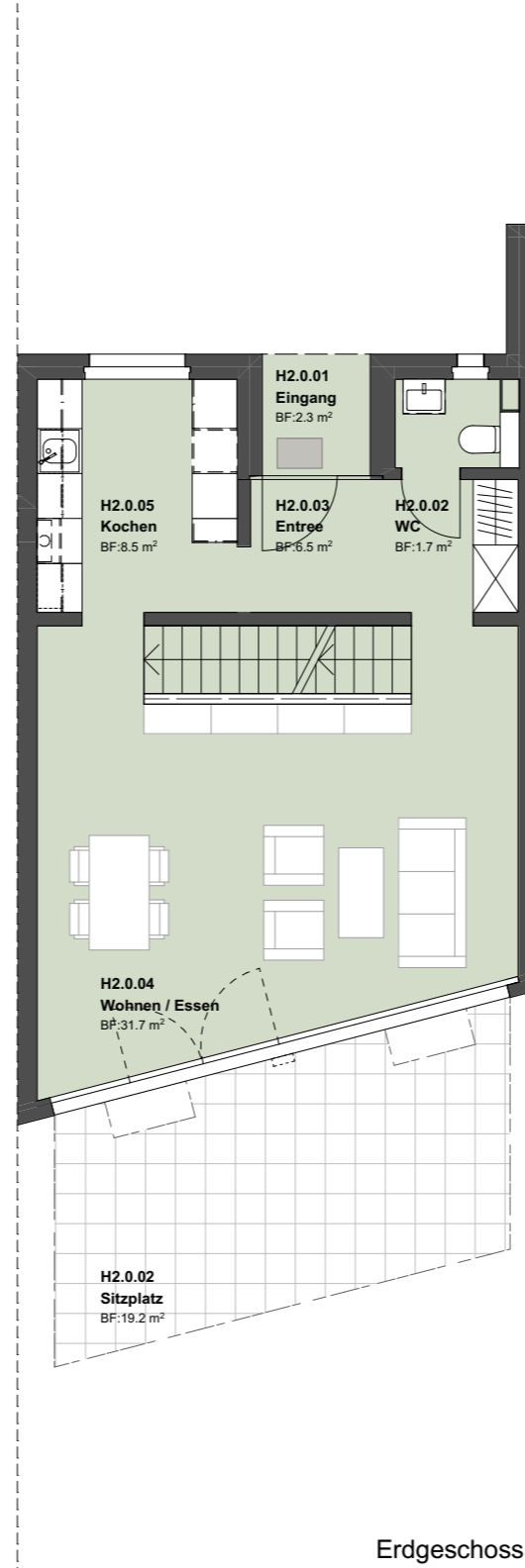
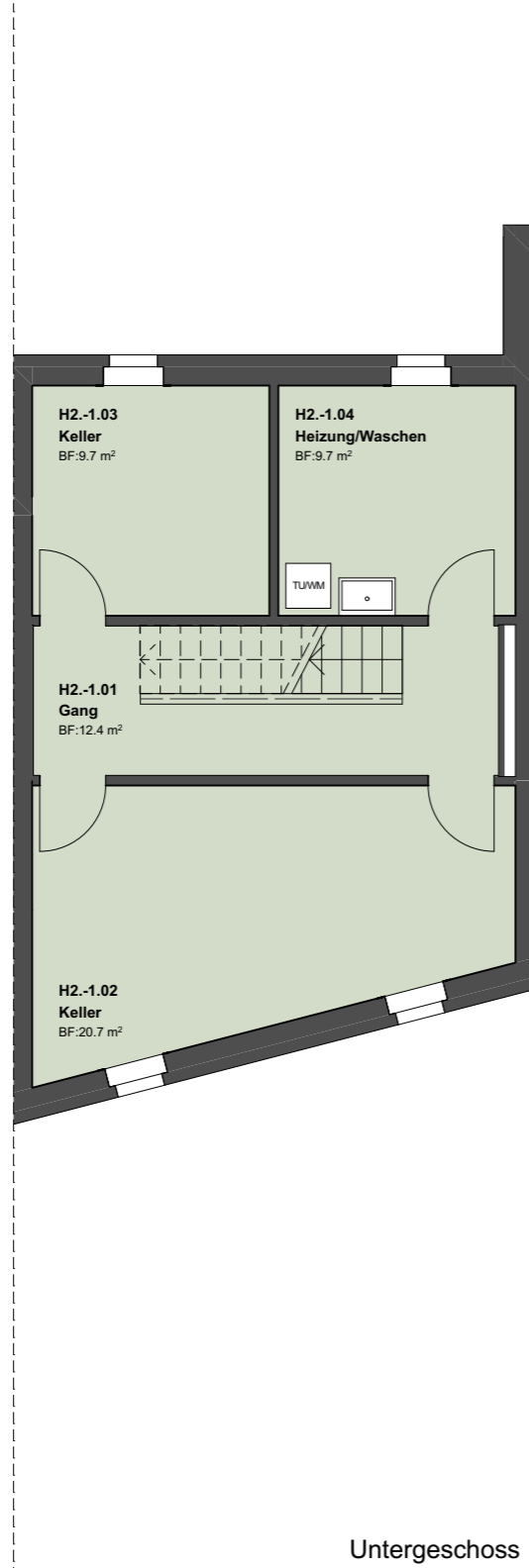
Wohnfläche 135.8 m²

Untergeschoss:

Gang	12.4 m ²
Keller	9.7 m ²
Keller	20.7 m ²
Heizung/Waschen	9.7 m ²

Parkplatz:

Parkplatznummer 2



**Haus nr. 22b:
5.5 - Zimmer**

Erdgeschoss:

Entree	6.5 m ²
Wohnen/Essen	31.7 m ²
Kochen	8.5 m ²
WC	1.7 m ²

Obergeschoss:

Zimmer	13.2 m ²
Zimmer	15.4 m ²
Diele	15.3 m ²
Bad	6.1 m ²

Dachgeschoss:

Gang	4.3 m ²
Zimmer	10.2 m ²
Zimmer	19.5 m ²
Dusche	3.4 m ²

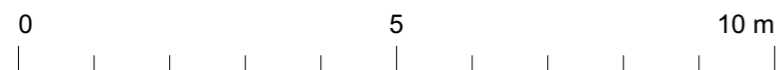
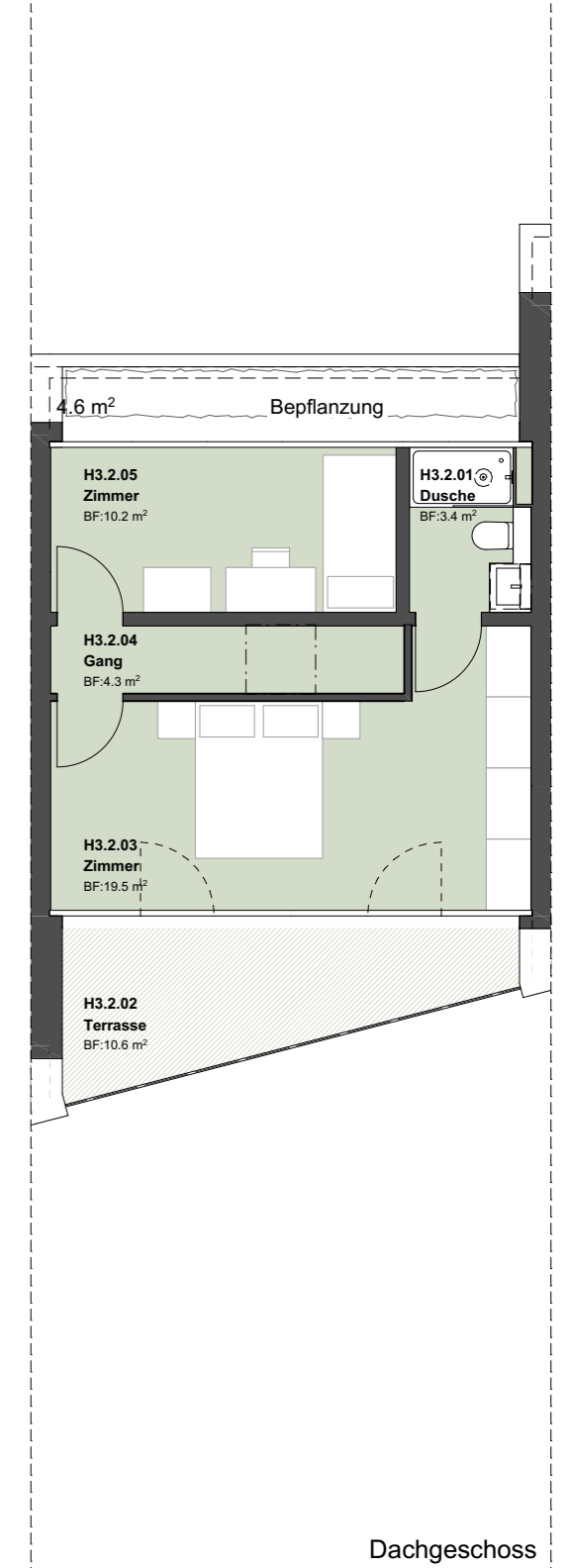
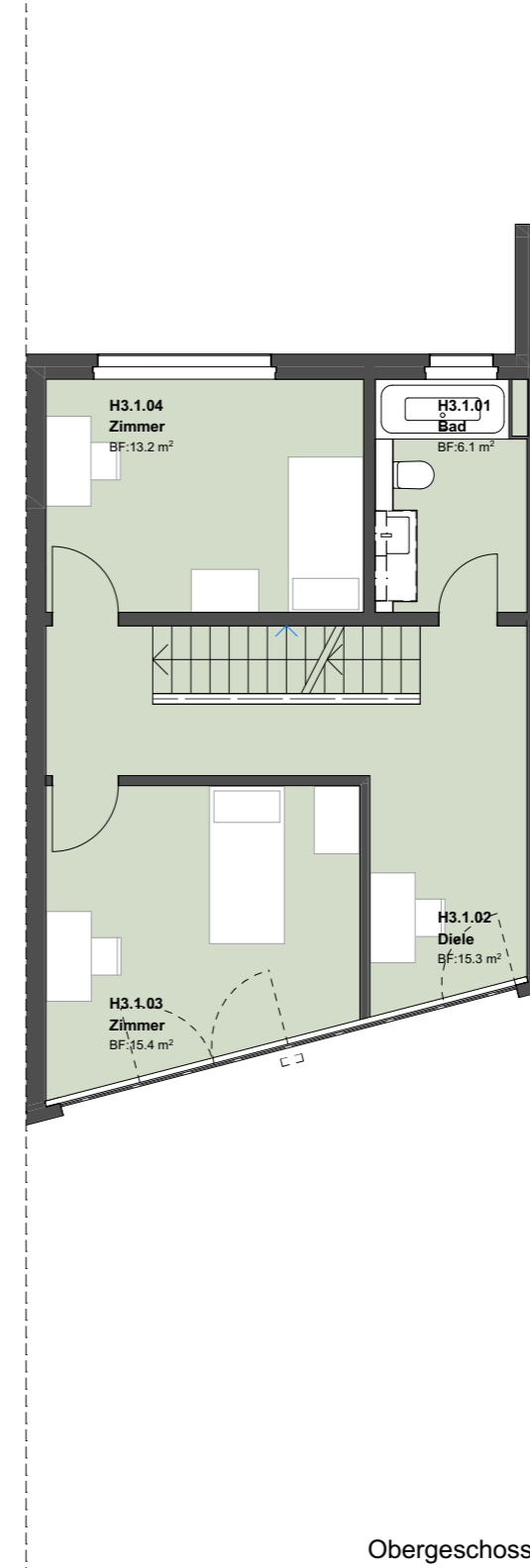
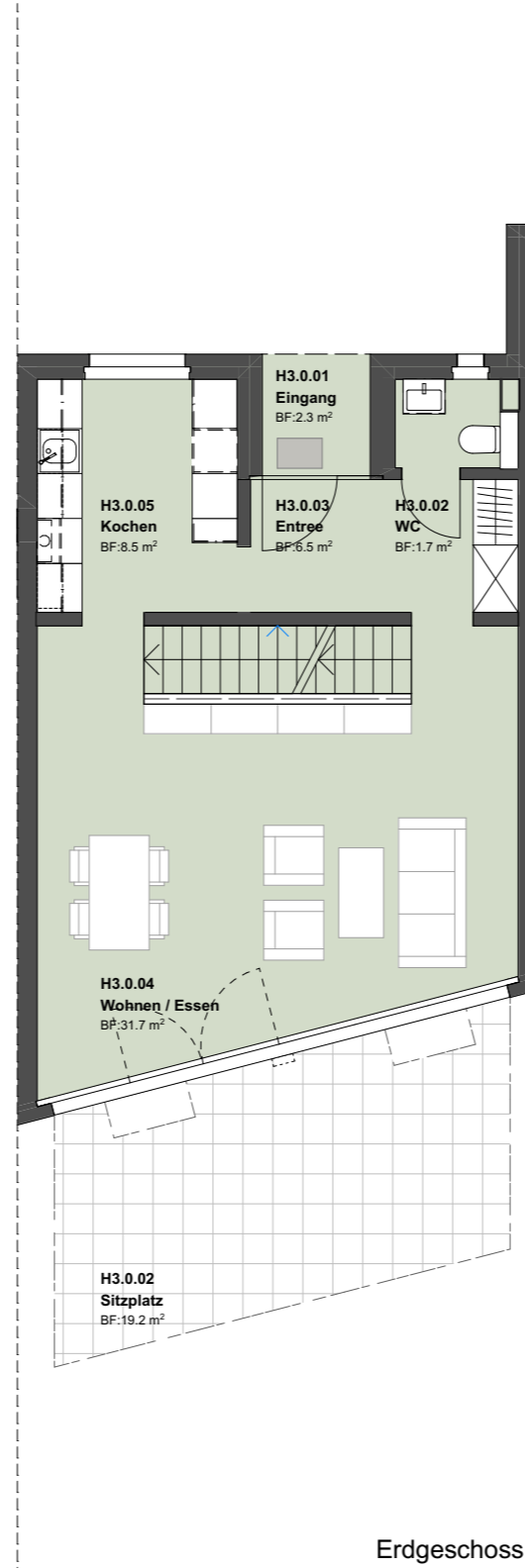
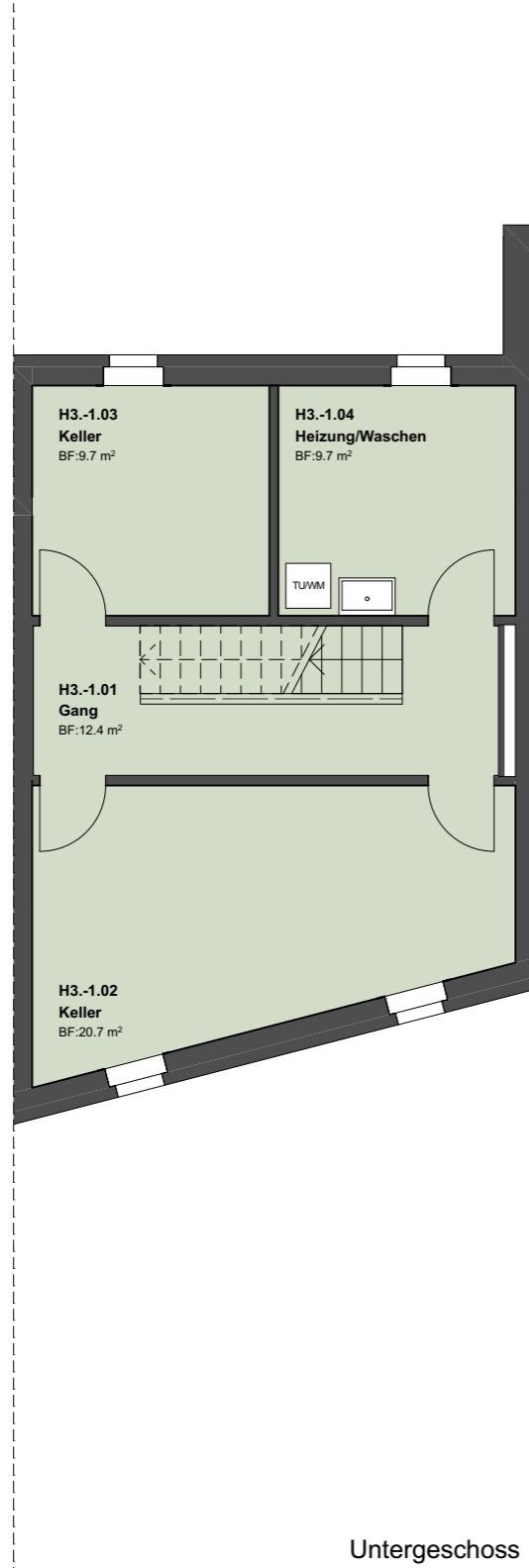
Wohnfläche 135.8 m²

Untergeschoss:

Gang	12.4 m ²
Keller	9.7 m ²
Keller	20.7 m ²
Heizung/Waschen	9.7 m ²

Parkplatz:

Parkplatznummer 3



**Haus nr. 22c:
5.5 - Zimmer**

Erdgeschoss:

Entree	6.5 m ²
Wohnen/Essen	31.7 m ²
Kochen	8.5 m ²
WC	1.7 m ²

Obergeschoss:

Zimmer	13.2 m ²
Zimmer	15.4 m ²
Diele	15.3 m ²
Bad	6.1 m ²

Dachgeschoss:

Gang	4.3 m ²
Zimmer	10.2 m ²
Zimmer	19.5 m ²
Dusche	3.4 m ²

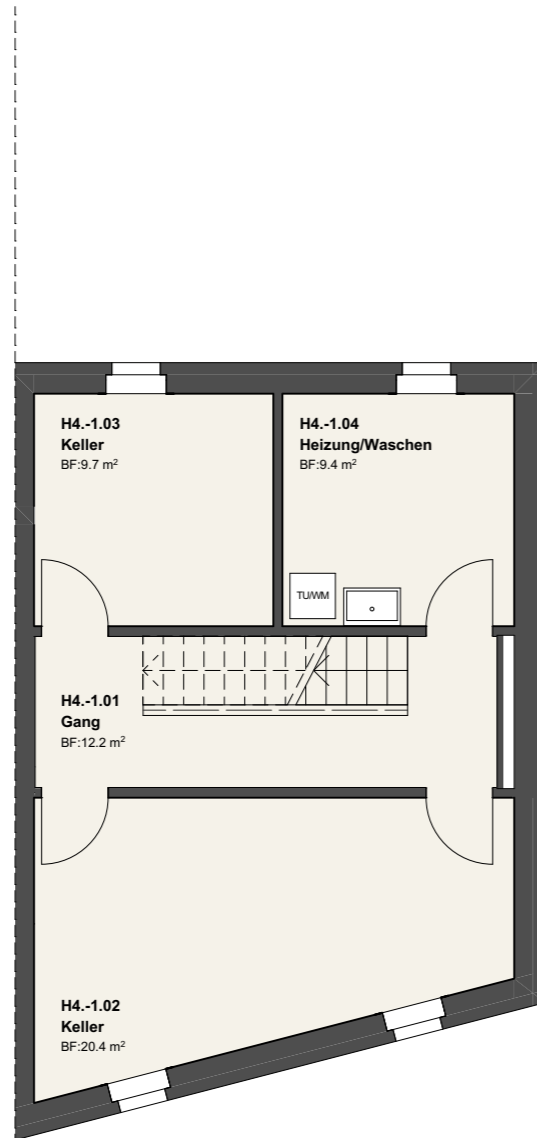
Wohnfläche 135.8 m²

Untergeschoss:

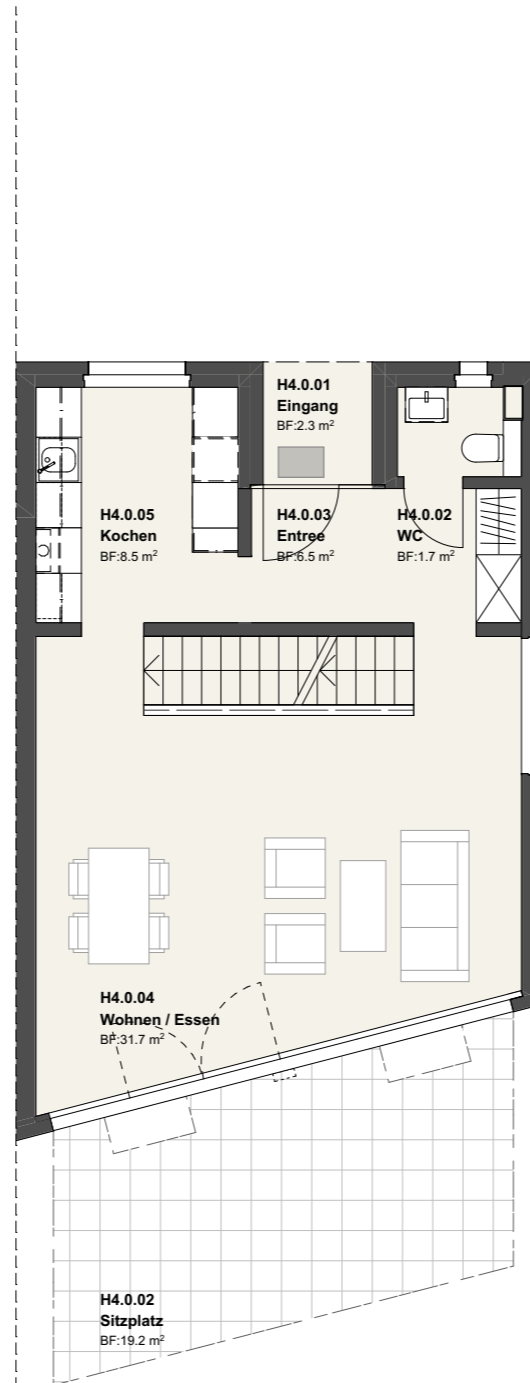
Gang	12.2 m ²
Keller	9.4 m ²
Keller	20.4 m ²
Heizung/Waschen	9.7 m ²

Parkplatz:

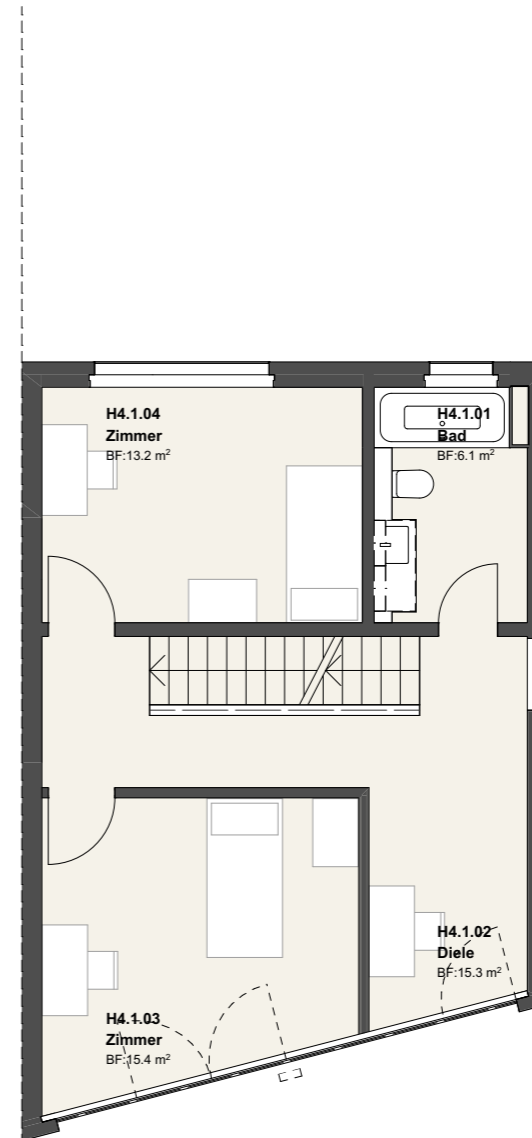
Parkplatznummer 4



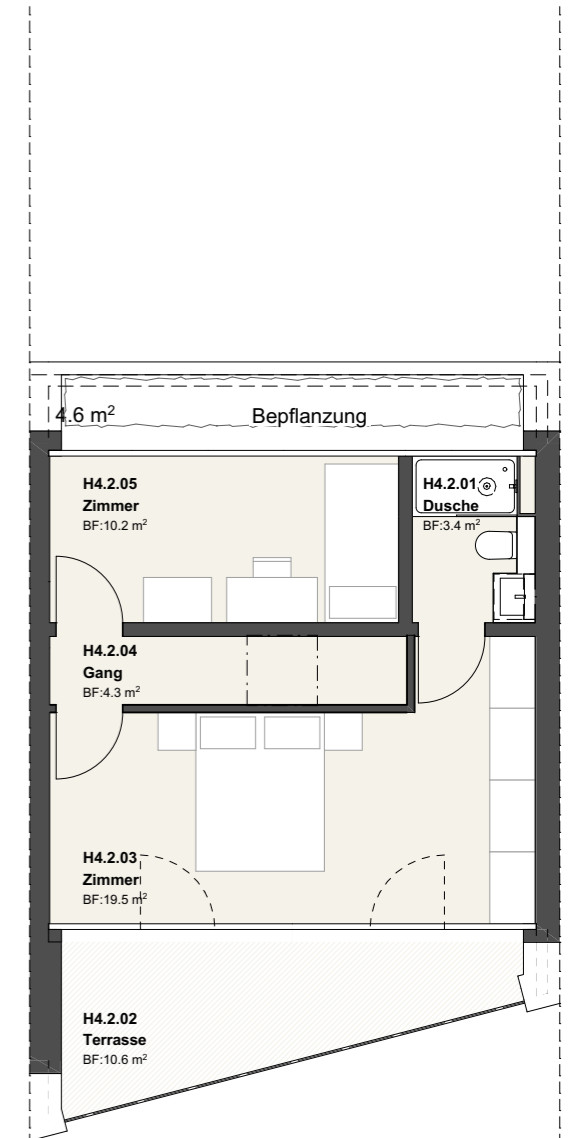
Untergeschoss



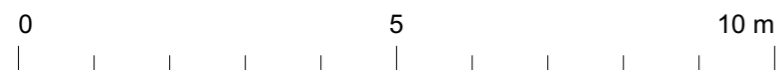
Erdgeschoss



Obergeschoss



Dachgeschoss



**Haus nr. 22d:
5.5 - Zimmer**

Erdgeschoss:

Entree	6.5 m ²
Wohnen/Essen	31.7 m ²
Kochen	8.5 m ²
WC	1.7 m ²

Obergeschoss:

Zimmer	13.2 m ²
Zimmer	14.2 m ²
Diele	16.5 m ²
Bad	6.1 m ²

Dachgeschoss:

Gang	4.3 m ²
Zimmer	10.2 m ²
Zimmer	19.5 m ²
Dusche	3.4 m ²

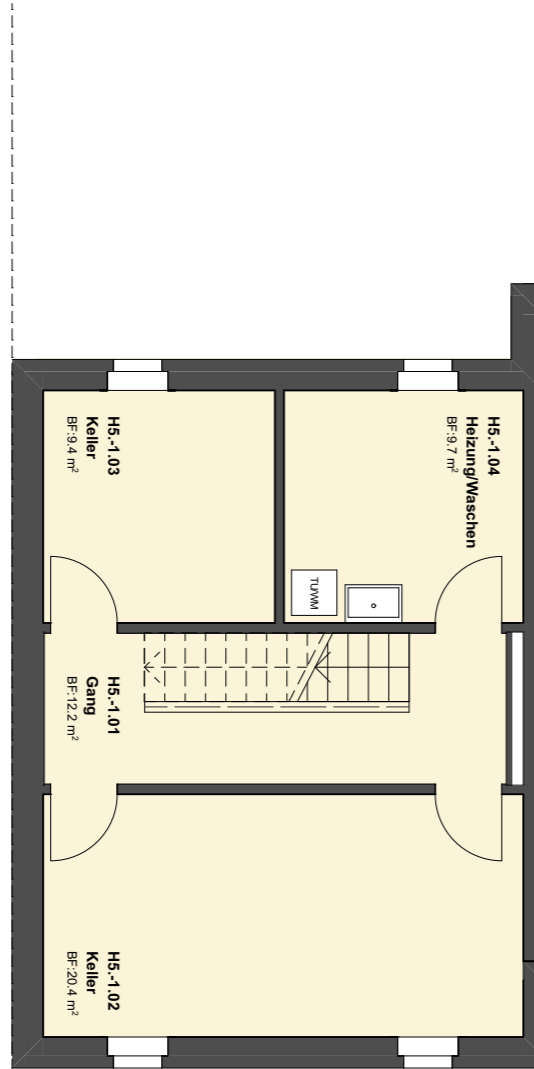
Wohnfläche 135.8 m²

Untergeschoss:

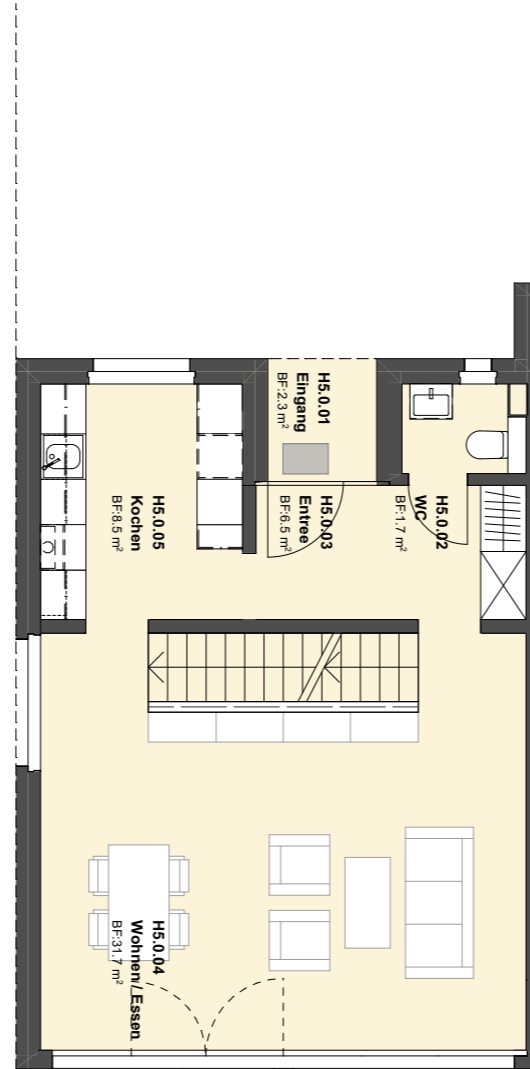
Gang	12.2 m ²
Keller	9.4 m ²
Keller	20.4 m ²
Heizung/Waschen	9.7 m ²

Parkplatz:

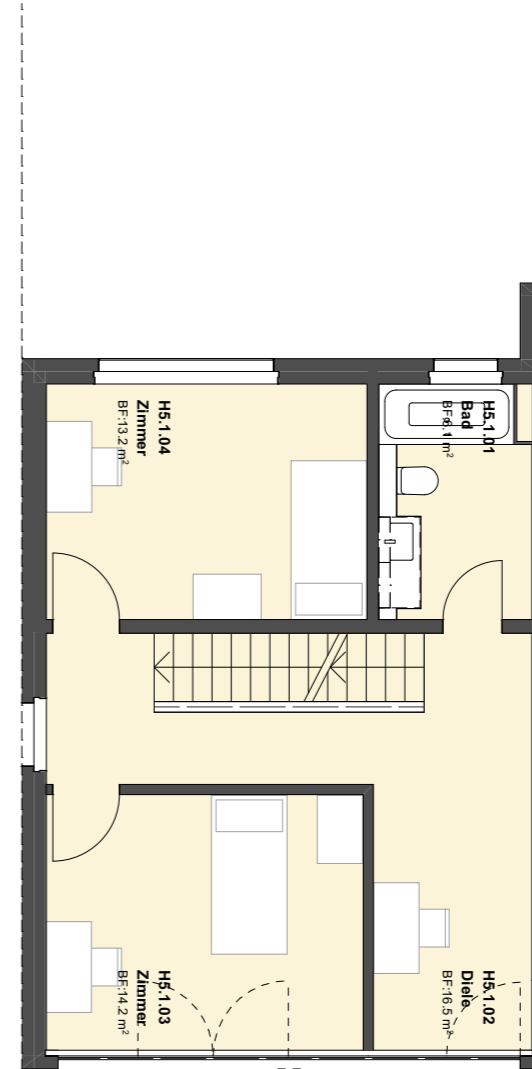
Parkplatznummer 5



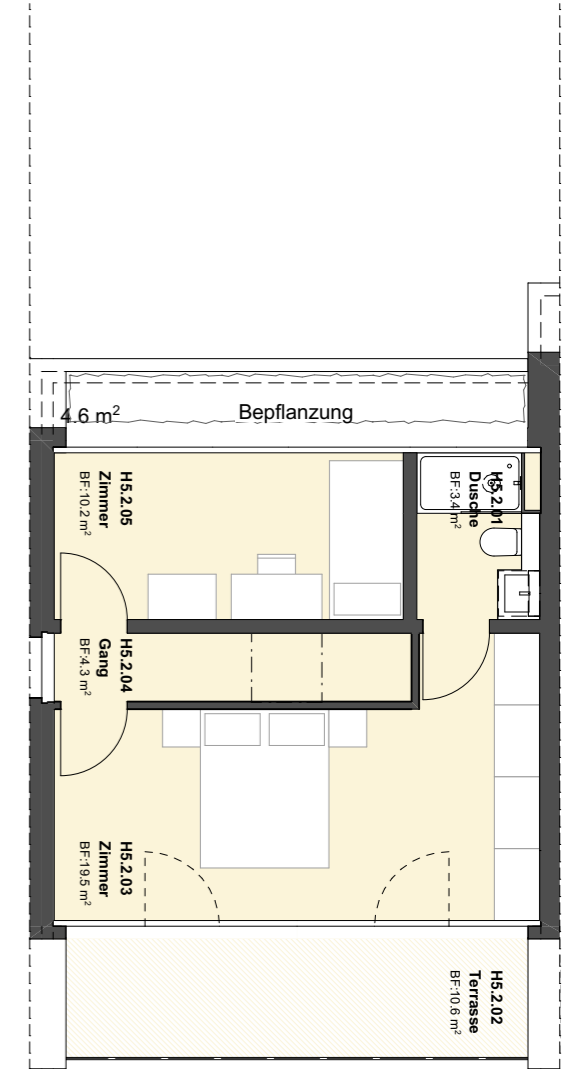
Untergeschoss



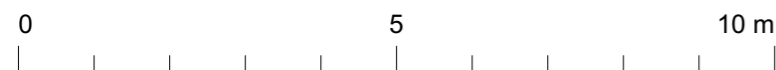
Erdgeschoss



Obergeschoss



Dachgeschoss



**Haus nr. 22e:
5.5 - Zimmer**

Erdgeschoss:

Entree	6.5 m ²
Wohnen/Essen	31.7 m ²
Kochen	8.5 m ²
WC	1.7 m ²

Obergeschoss:

Zimmer	13.2 m ²
Zimmer	14.2 m ²
Diele	16.5 m ²
Bad	6.1 m ²

Dachgeschoss:

Gang	4.3 m ²
Zimmer	10.2 m ²
Zimmer	19.5 m ²
Dusche	3.4 m ²

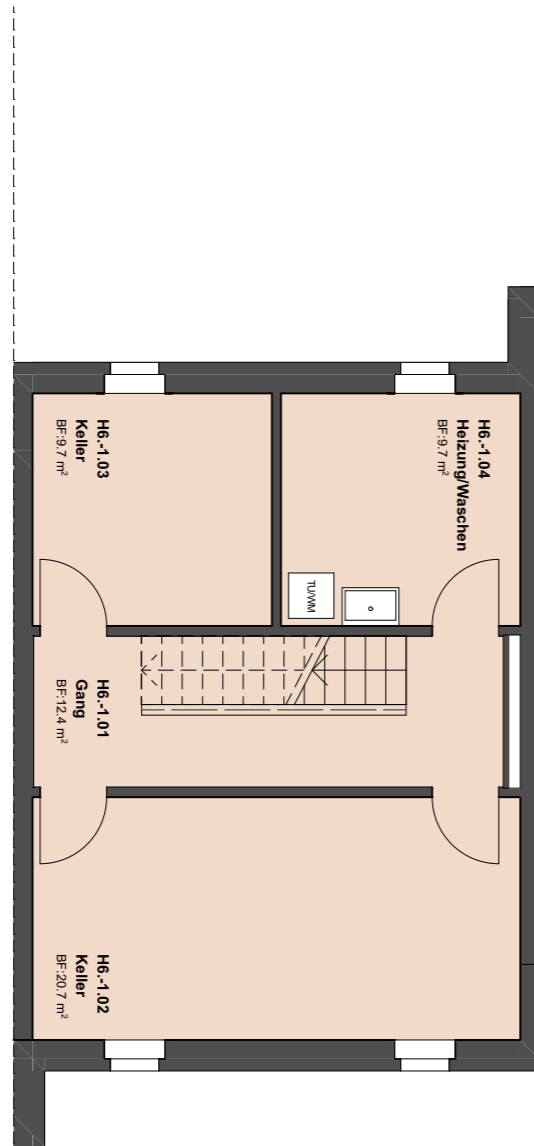
Wohnfläche 135.8 m²

Untergeschoss:

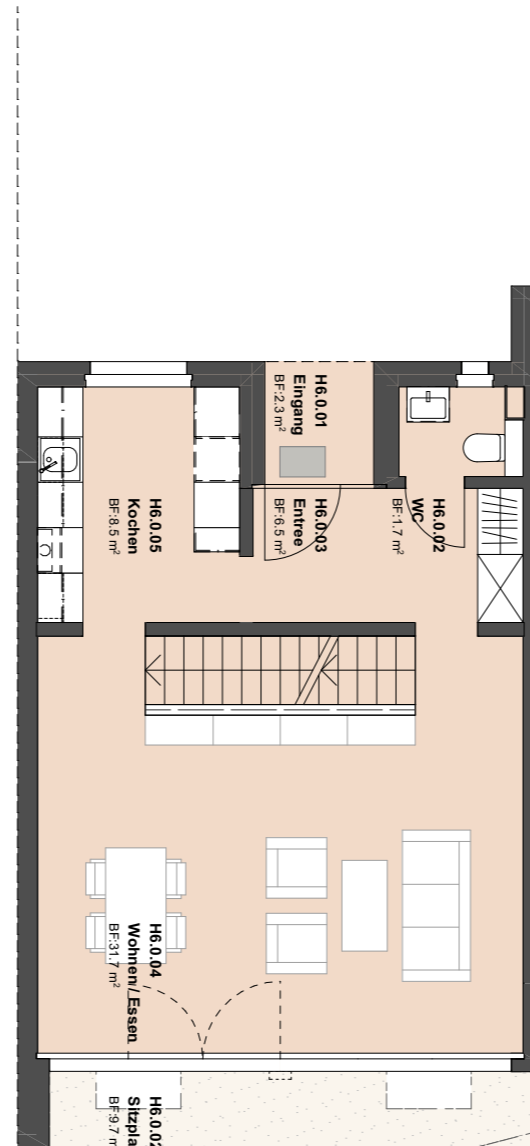
Gang	12.4 m ²
Keller	9.7 m ²
Keller	20.7 m ²
Heizung/Waschen	9.7 m ²

Parkplatz:

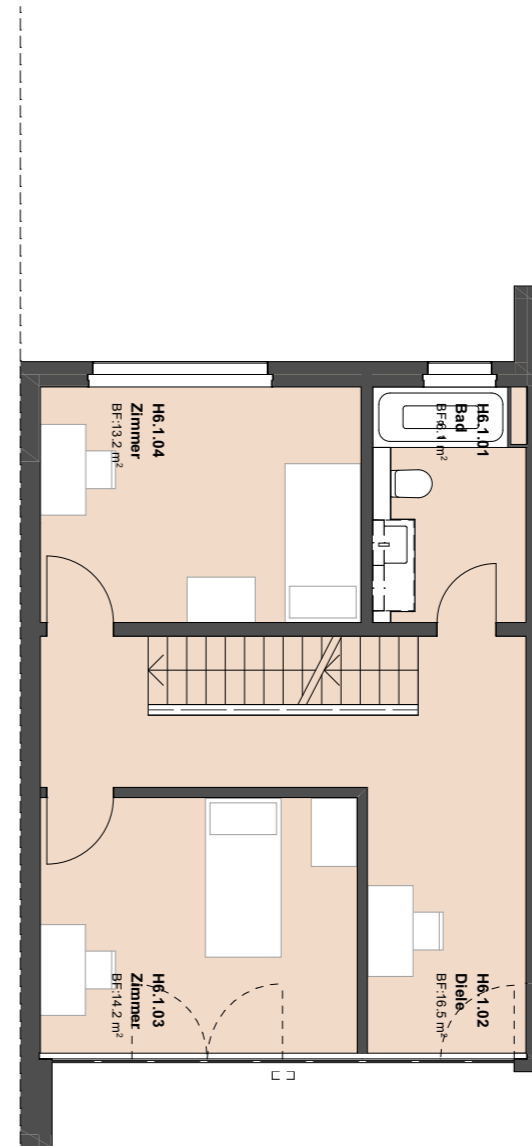
Parkplatznummer 6



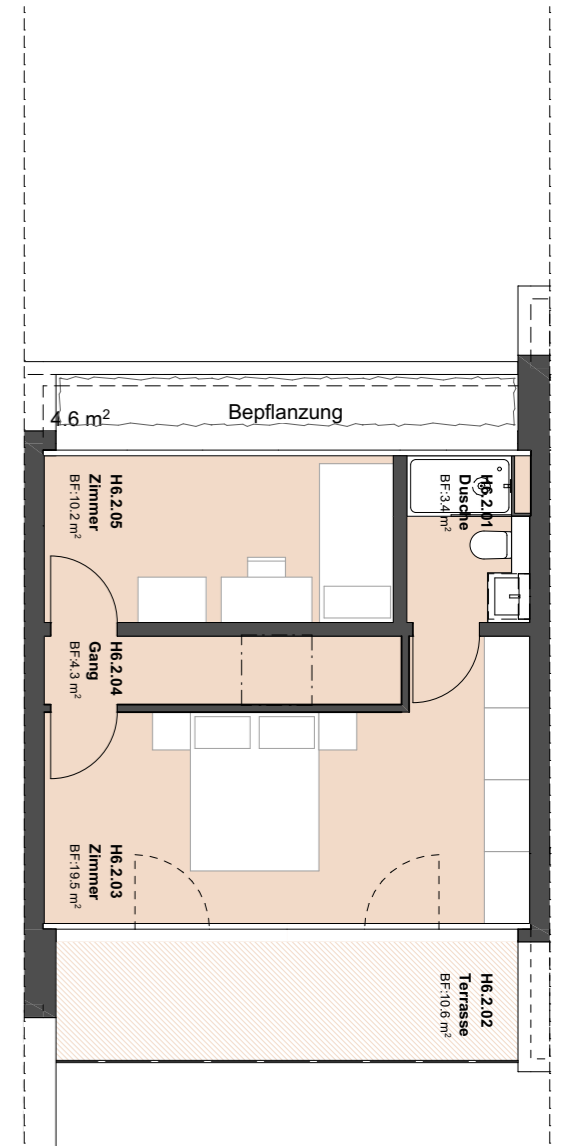
Untergeschoss



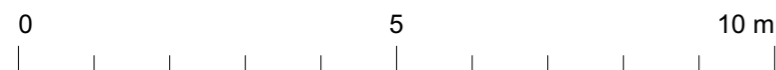
Erdgeschoss



Obergeschoss



Dachgeschoss



**Haus nr. 22f:
5.5 - Zimmer**

Erdgeschoss:

Entree	6.5 m ²
Wohnen/Essen	31.7 m ²
Kochen	8.5 m ²
WC	1.7 m ²

Obergeschoss:

Zimmer	13.2 m ²
Zimmer	14.2 m ²
Diele	16.5 m ²
Bad	6.1 m ²

Dachgeschoss:

Gang	4.3 m ²
Zimmer	10.2 m ²
Zimmer	19.5 m ²
Dusche	3.4 m ²

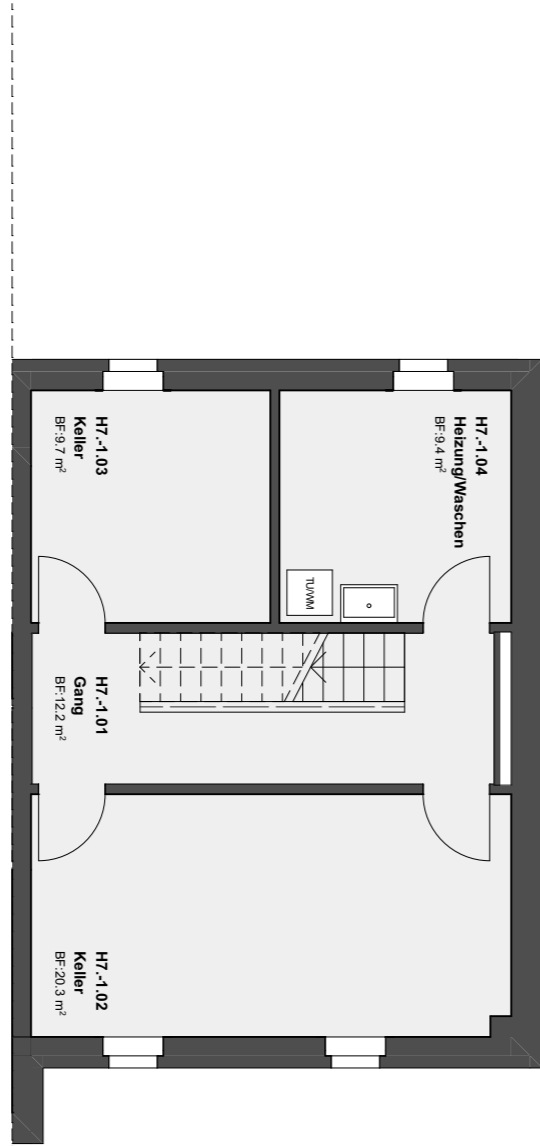
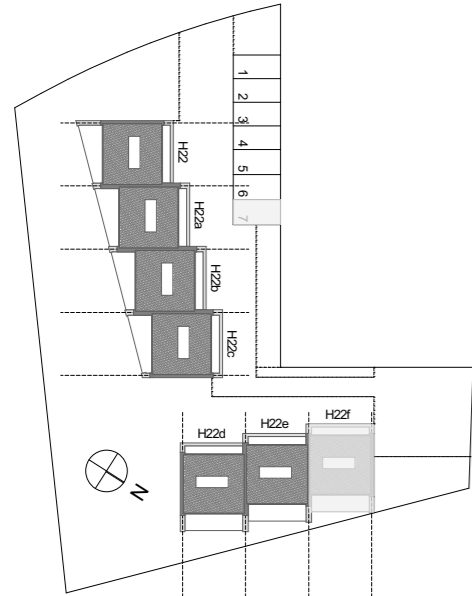
Wohnfläche 135.8 m²

Untergeschoss:

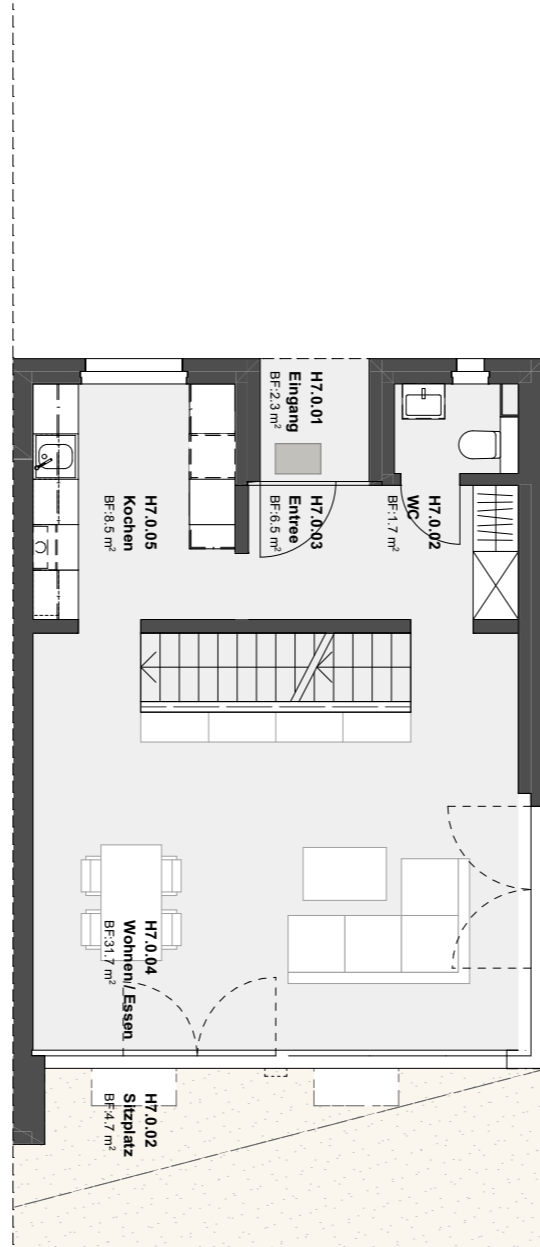
Gang	12.2 m ²
Keller	9.4 m ²
Keller	20.4 m ²
Heizung/Waschen	9.7 m ²

Parkplatz:

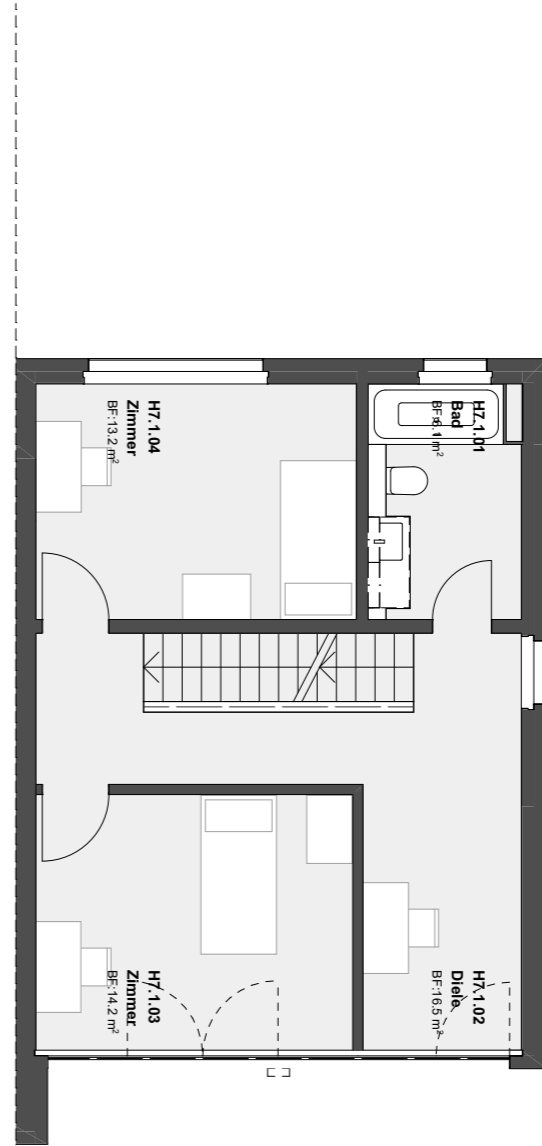
Parkplatznummer 7



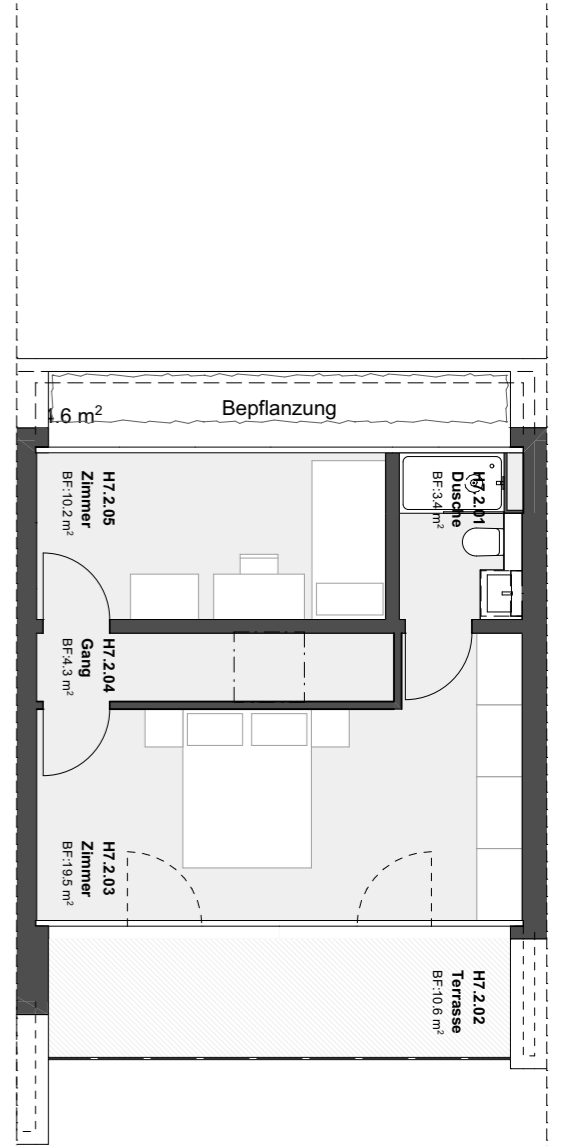
Untergeschoss



Erdgeschoss



Obergeschoss



Dachgeschoss

